

Ascending Chaos: Unveiling the Enigmatic Art of Masami Teraoka, 1966-2006

: A Journey into the Mind of a Visionary Artist

Masami Teraoka, a Japanese artist whose prolific career spanned four decades, left an indelible mark on the art world with his distinctive and unsettling imagery. His paintings, drawings, and sculptures delved into the depths of human consciousness, portraying a world teetering on the precipice of chaos and transcendence. Through his art, Teraoka invited viewers on a profound journey into the subconscious, where the familiar and the grotesque intertwined in a dance of beauty and horror.

The Early Years: Laying the Foundation for a Unique Artistic Vision

Born in Tokyo in 1936, Teraoka's artistic journey began at an early age. He exhibited a precocious talent for drawing, filling notebooks with intricate and imaginative scenes. His formative years were marked by the turbulence of post-World War II Japan, which left an enduring impact on his psyche. The horrors of war, the destruction of his childhood home, and the societal upheaval that followed became central themes in his later work.



Ascending Chaos: The Art of Masami Teraoka 1966-

2006 by Alison Bing

★★★★☆ 4.8 out of 5

Language : English

File size : 37529 KB

Text-to-Speech : Enabled

Screen Reader : Supported

Enhanced typesetting : Enabled

Print length : 248 pages

Lending : Enabled



The 1960s: Embracing the Avant-Garde and Exploring the Unconscious

In the 1960s, Teraoka emerged as a pivotal figure in Japan's avant-garde art movement. Inspired by the works of Surrealists such as Salvador Dalí and Max Ernst, he began to incorporate elements of dream imagery and the subconscious into his art. His paintings became increasingly abstract, filled with floating figures, distorted faces, and erotic symbols.

Teraoka also delved into the realm of performance art, using his body as a canvas for his explorations. He created ephemeral works that blurred the boundaries between art and life, often involving nudity, ritualistic actions, and collaborations with dancers and musicians.

The 1970s and 1980s: Maturing into a Master of the Grotesque

As Teraoka matured as an artist, his work took on a darker and more disturbing tone. He became known for his depictions of grotesque and mutilated figures, often engaged in acts of violence or sexuality. His paintings and drawings pulsated with a sense of unease, drawing viewers into a world where the familiar became monstrous and the boundaries between reality and fantasy dissolved.

Teraoka's art became a reflection of his own inner turmoil and his fascination with the darker aspects of human nature. He explored themes of death, decay, and the fragility of the body, creating images that were both repulsive and strangely alluring.

The 1990s and Beyond: Transcending the Grotesque and Embracing Beauty

In the 1990s, Teraoka's work underwent a subtle but significant shift. While the grotesque remained a central element in his art, he began to incorporate more elements of beauty and spirituality. His paintings and sculptures became more ethereal and meditative, as if he were seeking a way to transcend the darkness that had consumed him for so long.

Teraoka's later work exhibited a newfound sense of hope and resilience. He created images of flowers, animals, and celestial bodies, suggesting the possibility of renewal and redemption amidst the chaos and suffering.

Legacy and Influence: A Lasting Impact on the Art World

Masami Teraoka's art continues to resonate with audiences around the world, inspiring and unsettling in equal measure. His work has been exhibited in countless museums and galleries, and his influence can be seen in the works of contemporary artists both in Japan and abroad.

Teraoka's legacy lies in his ability to confront the darkest aspects of human nature while simultaneously offering a glimmer of hope. His art serves as a mirror to our own fears and desires, inviting us to confront our own inner demons and the complexities of the human condition.

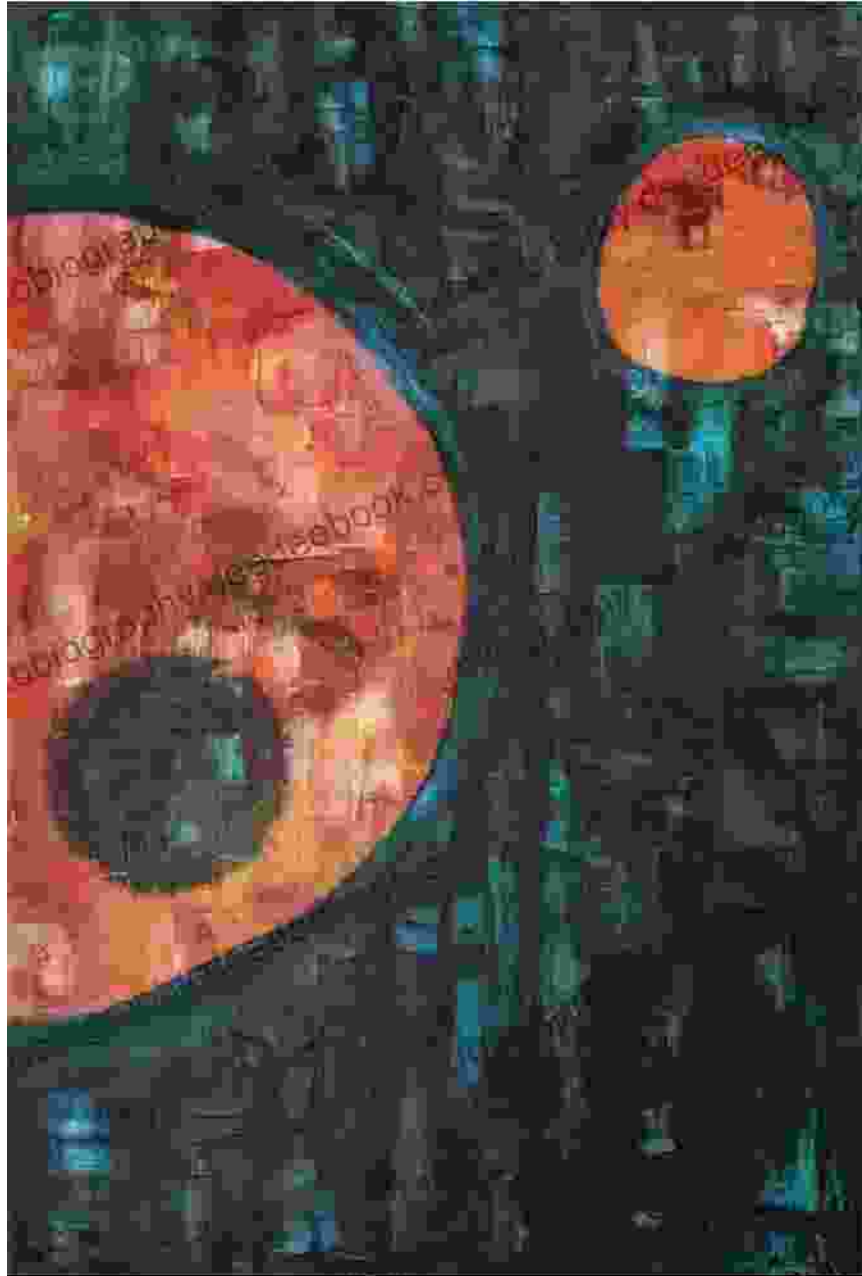
Exploring Teraoka's Notable Works



Screaming Figure (1967): This iconic painting exemplifies Teraoka's early exploration of the subconscious, featuring a distorted and grotesque figure with a distorted face and outstretched arms.



Nagasaki Cross (1975): A powerful anti-war statement, this mixed-media piece depicts a crucifixion scene set against a background of charred and destroyed buildings, evoking the horrors of the atomic bombing.



The Birth of the Void (1983): This haunting painting showcases Teraoka's mastery of the grotesque, featuring a disembodied female figure with exposed internal organs, referencing themes of physical and emotional pain.



Creation and Destruction (1998): A more optimistic work from Teraoka's later period, this mixed-media piece depicts a celestial scene with floating figures, flowers, and animals, suggesting the interconnection of life and death.

: An Enigma Unraveled

Masami Teraoka's art is a testament to the power and fragility of the human psyche. Through his unique and unsettling imagery, he explored the darkest recesses of our subconscious, revealing the complexities and contradictions that lie within us all. While his work may not be for the faint

of heart, it offers a profound and unforgettable glimpse into the human condition, reminding us that beauty and horror exist side by side, and that even in the darkest of times, there is always the glimmer of hope.



Ascending Chaos: The Art of Masami Teraoka 1966-2006 by Alison Bing

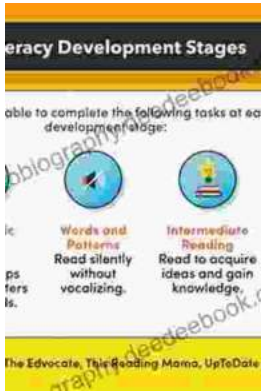
★★★★☆ 4.8 out of 5

Language : English
File size : 37529 KB
Text-to-Speech : Enabled
Screen Reader : Supported
Enhanced typesetting : Enabled
Print length : 248 pages
Lending : Enabled



Education And Peace Montessori 10: Where Learning Flourishes in a Haven of Harmony

A Symphony of Learning and Well-being Amidst the hustle and bustle of the modern world, there exists a sanctuary where learning and peace intertwine seamlessly—Education...



Unveiling the Wonders of Language and Literacy Development: A Comprehensive Guide

Language and literacy are fundamental aspects of human development that allow us to communicate, learn, and connect with the world around us. The journey...